



# Package Plant for drinking water



**Life is good** – with clean water



The **Package Plant for drinking water** is a cost-effective compact water plant based on a modernised version of the conventional water treatment processes, which means that all the necessary components for coagulation, flocculation, clarification, filtration and disinfection are combined in a compact system.

The **Package Plant for drinking water** is easy to operate, has a low energy consumption and is ready to use.

The **Package Plant** from **MARTIN Membrane Systems** meets the WHO Guidelines for drinking-water quality and other international water quality standards.

Its versatile design makes it ideal for potable water treatment and industrial process water and also can be used as advanced treatment for wastewater or to reduce suspended solids, phosphorus and other contaminants like heavy metals.

Characteristics	Product Nr.	
	MMS-DW20	MMS-DW60
Capacity [m³/h]	20	60
Capacity [m³/d]	500	1500
Population [Persons]*	4000	12000
Energy demand [kW]	4	6

\* Estimated provision of safe drinking water per person: 125 L/d

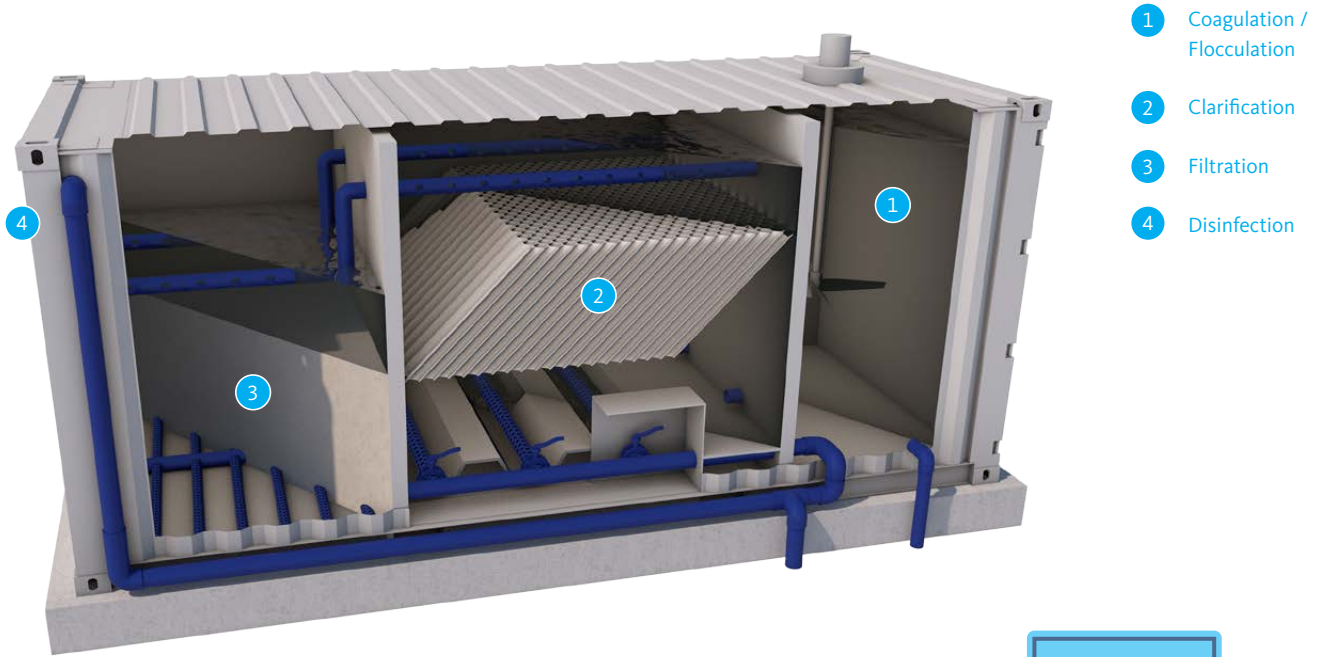
## Motivation

Our future-oriented and innovative products are aimed at the continuous improvement in the quality of life. As an environmental protection company, we also feel committed to healthcare, in particular to the improvement of drinking water quality and thus the protection of public health worldwide.

The guiding principle of all our actions is the economically viable provision of people and the environment with the best possible water treatment technology.

## Features

- Fast delivery and start-up due to the mobile concept
- German quality equipment in stainless steel housing
- Minimum construction work on site and easy to relocate
- Compact design and high packing density
- Treated water meets WHO Guidelines for drinking-water quality and other international water standards
- Very good price-performance ratio
- Low maintenance and minimum operation requirement



- 1 Coagulation / Flocculation
- 2 Clarification
- 3 Filtration
- 4 Disinfection



## Applications

**MARTIN Membrane Systems** offers tailor-made **Package Plants** to be used as:

- Potable water for cities and villages
- Process water treatment
- Mobile water treatment plants for special events

The **Package Plant for drinking water** may be used as well to the following:

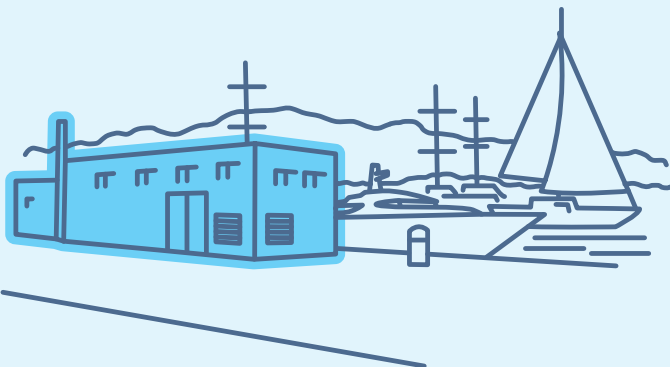
- Improve surface water quality
- Treatment of grey water

**MARTIN Membrane Systems** offers complete compact water plants including the following steps

- Pre-chlorination
- Coagulation
- Flocculation
- Clarification
- Filtration
- Disinfection

In addition, optional equipment can be offered to customize the system

- Pre-settling unit for highly turbid water
- Pontoon to carry the feeding pumps
- Power generator
- Water storage tanks for underground installation or in elevated tower
- Small portable water quality laboratory
- Containerised operating rooms
- Pumping stations for water supply network





Municipal



Industrial



Private



Maritime



[info@martin-membrane.com](mailto:info@martin-membrane.com)

Friedrichstraße 95  
10117 Berlin  
Germany  
phone: +49 30 20964400

Werkringstraße 10  
96515 Sonneberg  
Germany  
phone: +49 3675 73350

Von-Thünen-Str. 1-4  
19071 Brüsewitz bei Schwerin  
Germany  
phone: +49 38874 432610

